



North End Park, Belleville



Centennial Park, Swansea

The Illinois Trekkers invite you to walk in Illinois to celebrate their bicentennial. Pack your water bottle and sunscreen! We are walking along the Richland Creek Greenway from Belleville to Swansea and return.

START LOCATION: Start at North End Park, Douglas Avenue and North Illinois Street (IL159), Belleville, Illinois

START TIME: Start between 8 am and 11 am.

FINISH TIME: Walk at your own pace. You must be finished by 2 pm.

DISTANCE(S): 5k and 10k walks will be offered.

TRAIL: 5k and 10k trails rated 1A. Trails are marked with signs, ribbons, and chalk. Walk is on park trails and residential streets.

PLEASE CROSS BUSY STREET BETWEEN PARKS CAREFULLY, USING PEDESTRIAN LIGHT AND CROSSWALK.

REGISTRATION: Everyone is welcome to participate in this event for a fee of \$3. An adult must accompany children age 12 and under. All participants must check in at the registration table and receive a start card. The start card must be carried on the walk. Start Cards remain the property of the Illinois Trekkers and must be turned in at the finish point at the end of the walk. There is no refund for monies paid. Event will take place regardless of weather.

REFRESHMENTS: Water and restrooms will be available at the Start/Finish.

INFORMATION CONTACT: The points of contact are Darleen Kraemer, phone 618-277-4228 or 618-409-7226 and Louis Krummel, phone 618-416-4759.

AVA Website is www.ava.org

Illinois Trekkers Website is www.illinois-trekkers.org/

DISCLAIMER: AVA and the sponsors of this event are not liable for accidents, thefts, or material damage. Every effort will be made to make this a safe, enjoyable and memorable event.

SPECIAL BOOKS: Bridges – Spanning the USA

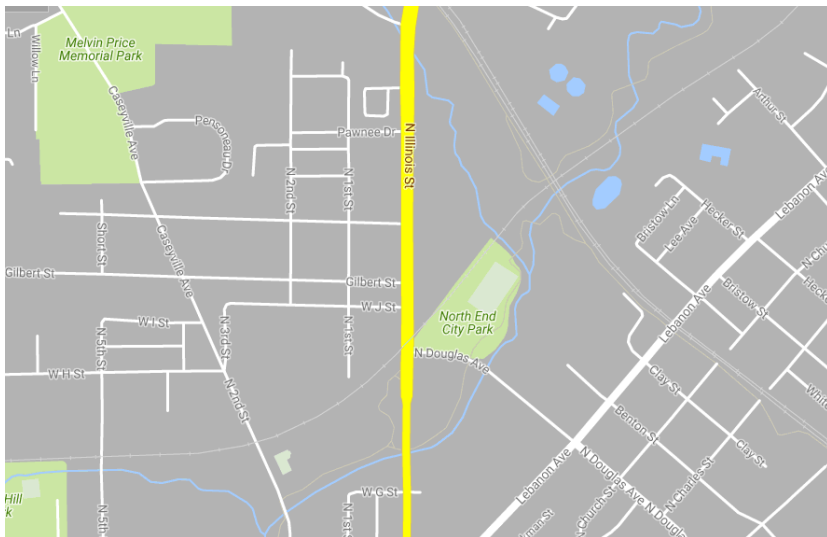
Take a Walk in a City Park

Walking the USA A-Z

DIRECTIONS:

From I64. Take Exit 12 to Belleville/Collinsville, going south on Route 159/North Illinois. Continue through Swansea. At railroad track, turn left onto Douglas Avenue, and then left into park. The parking lot is on your left.

From Route 159. Go north to Belleville and continue around the fountain, going north for another .7 mile to Douglas Avenue. Turn right (before tracks), then left into park.



RICHLAND CREEK ADVENTURE! North End to Centennial Park

Belleville, Illinois

A Non-competitive 5k, 10k & 20k Walk Credit Only



Presented by Illinois Trekkers

Saturday, July 21, 2018

AVA Sanction Number: MA18-110972

